



redrockweld
welder & positioner rentals

welder & positioner rentals

2021 brochure

redrockautomation.com

sales@redrockautomation.com

MMA WELDING PACKAGES



170TX Package

Primary voltage: 220V

Capacity: 170 A

Duty cycle: 160 A at 35% - 130 A at 100%

Machine Dimensions : 800 x 600 x 430 mm

Weight: 19 kg

TT2200 Package

Primary voltage: 220V

Capacity: 200 A

Duty cycle: 220 A at 40% - 150 A at 100%

Machine Dimensions : 800 x 600 x 400 mm

Weight: 22 kg



300 TPX (AIR) Package

Primary voltage: 380V

Capacity: 300 A

Duty cycle: 300 A at 45% - 230 A at 100%

Machine Dimensions : 800 x 600 x 400 mm

Weight: 42 kg

FLEXTEC 450 500A - ARC 301

FLEXTEC 450 500 A ARCAIR - ARC 303

Primary voltage: 380V

Capacity: 500 A

Duty cycle: 450 A at 60% - 400 A at 100%

Machine Dimensions : 800 x 600 x 670 mm

Weight: 80 kg



FLEXTEC 650 750 A ARCAIR

Primary voltage: 380V

Capacity: 750 A

Duty cycle: 750 A at 60% - 650 A at 100%

Machine Dimensions : 800 x 600 x 770 mm

Weight: 110 kg

TIG WELDING PACKAGES



170TX PACKAGE

Primary voltage: 220V

Capacity: 160 A

Duty cycle: 160 A at 35% - 130 A at 100%

Machine Dimensions : 800 x 600 x 430 mm

Weight: 24 kg

TT 2200 PACKAGE - TIG 200

MW220 (ALU) - TIG 210

Primary voltage: 220V

Capacity: 200 A

Duty cycle: 220 A at 40% - 150 A at 100%

Machine Dimensions : 800 x 600 x 400 mm

Weight: 30 kg



TT 3000 PACKAGE (AIR) - TIG 300

Primary voltage: 380V

Capacity: 300 A

Duty cycle: 300 A at 45% - 230 A at 100%

Machine Dimensions : 590 x 570 x 1220 mm

Weight: 95 kg



TT 3000 (WATER) - TIG 302

MW 3000 (ALU) - TIG 310

Primary voltage: 380V

Capacity: 300 A

Duty cycle: 300 A at 45% - 230 A at 100%

Machine Dimensions : 590 x 570 x 1220 mm

Weight: 100 kg

INVERTEC 300 TPX PACKAGE

Primary voltage: 380V

Capacity: 300 A

Duty cycle: 270 A at 40% - 200 A at 100%

Machine Dimensions : 800 x 600 x 400 mm

Weight: 63 kg



MW 5000 (WATER/ALU) PACKAGE

Primary voltage: 380V

Capacity: 500 A

Duty cycle: 500 A at 40% - 350 A at 100%

Machine Dimensions : 1200 x 800 x 1140 mm

Weight: 145 kg



MIG WELDING PACKAGES



OMEGA 300 (BI-TENSION) PACKAGE

Primary voltage: 220V/380V

Capacity: 300 A

Duty cycle: 300 A at 15% - 110 A at 100%

Machine Dimensions : 800 x 600 x 700 mm

Weight: 60 kg

TPS 270i (ALU) PACKAGE - MIG301

Primary voltage: 380V

Capacity: 270 A

Duty cycle: 270 A at 40% - 170 A at 100%

Machine Dimensions : 800 x 600 x 700 mm

Weight: 50 kg



TPS 500i (WATER/ALU) PACKAGE - MIG 510

Primary voltage: 380V

Capacity: 500 A

Duty cycle: 500 A at 40% - 360 A at 100%

Machine Dimensions : 1200 x 800 x 1350 mm

Weight: 180 kg

TPSi PUSH PULL TORCH PACKAGE - MIG 503

**10 m torch with aluminum adaptation kit
for TPSi station**

MIG WELDING PACKAGES



TRANSTEEL 5000 (WATER) PACKAGE

Primary voltage: 380V

Capacity: 500 A

Duty cycle: 500 A at 40% - 360 A at 100%

Machine Dimensions : 1200 x 800 x 1350 mm

Weight: 180 kg

POWERTEC 425S (WATER) PACKAGE

Primary voltage: 380V

Capacity: 420 A

Duty cycle: 420 A at 40% - 265 A at 100%

Machine Dimensions : 1200 x 800 x 1300 mm

Weight: 250 kg



FLEXTEC + LN25 (INNERSHIELD) PACKAGE - MIG504

Primary voltage: 380V

Capacity: 450 A

Duty cycle: 450 A at 60% - 400 A at 100%

Machine Dimensions : 1200 x 800 x 1160 mm

Weight: 115 kg

XMT 450 MILLER PACKAGE

Primary voltage: 380V

Capacity: 600 A

Duty cycle: 580 A at 60% - 400 A at 100%

Machine Dimensions : 1200 x 800 x 1160 mm

Weight: 150 kg



PLASMA CUTTING PACKAGES



PLASMA 30XP PACKAGE

Primary voltage: 220V

Cutting Capacity: 10mm max at slow speed

Machine Dimensions : 770 x 250 x 340 mm

Weight: 15 kg

PLASMA 30 AIR PACKAGE - PLA201

Primary voltage: 220V

Cutting Capacity: 10mm max at slow speed

Machine Dimensions : 770 x 250 x 340 mm

Integrated compressor

Weight: 15 kg



PLASMA 105 PACKAGE - PLA 300

Primary voltage: 380V

Cutting Capacity: 38mm

Drilling Capacity: 22mm

Machine Dimensions : 800 x 600 x 650 mm

Weight: 50 kg



PLASMA 125 PACKAGE - PLA 301

Primary voltage: 380V

Cutting Capacity: 44mm

Drilling Capacity: 25mm

Machine Dimensions : 800 x 600 x 650 mm

Weight: 60 kg

GOUGING & OXY/FUEL PACKAGES



ARCAIR SLICE PACKAGE

Primary voltage: Battery

Pencil diameter: 6 , 4mm

Machine Dimensions : 660 x 270 x 260 mm

Weight: 11 kg

CUTTING TORCH ASSEMBLY

20m full line

Oxygen and Acetylene regulators included



PIPE CUTTING PACKAGES

Motorised cutting feed

Track Diameter \varnothing 12' (323 mm) \varnothing 48" (1219 mm)

Plasma or Victor torch mount

Voltage : 220v

Weight : 35kg

MIG/MAG WELDING TRACTORS

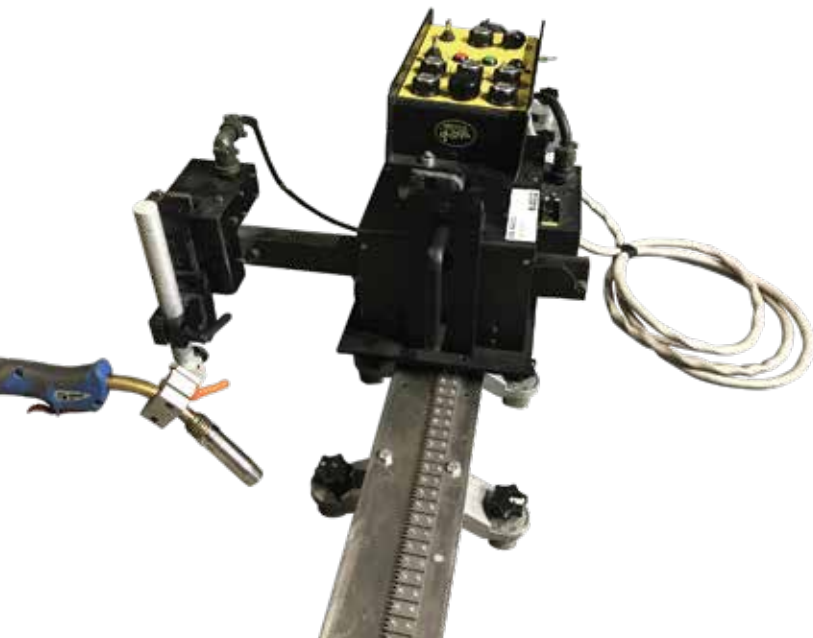


BUG-0 II TRACTOR PACKAGE

Primary voltage: 220v
Linear speed: 102 - 1905 mm/min
Loading capacity : 22kg
Clamping thickness : 0.5 - 50mm
Dimensions : 203 x 194 x 267 mm
Weight: 6.5 kg

BUG-0 III TRACTOR PACKAGE

Primary voltage: 220v
Linear speed: 102 - 1905 mm/min
Loading capacity : 22kg
Clamping thickness : 0.5 - 50mm
Dimensions : 203 x 194 267 mm
Support double XY
Weight: 12.2 kg



BUG-0 MATIC TRACTOR PACKAGE

Primary voltage: 220v
Linear speed: 75 - 1755 mm/min
Oscillation speed : 100 - 2500 mm/min
Time Delay : 0 - 3 Seconds
Oscillation width : 2.5mm - 50mm
Oscillation stroke : 100mm
Dimensions (with rail) : 1500 x 500 x 600 mm
Weight: 60 kg



CHARIOT BUG-O GO-VER IV PACKAGE

Primary voltage: 220v
Forward speed: 63.5 - 2540 mm/min
Vertical loading capacity : 6.8kg
Horizontal loading capacity : 27.3kg
Dimensions : 369 x 699 x 377 mm
Weight: 7.7 kg

CLINOX STRIPPING SYSTEM

Pickling and passivation for stainless steel Tig welding
Primary Voltage: 220v
Dimensions : 800 x 600 x 400 mm
Weight: 30 kg



PIPE PREPARATION MACHINE 0.5 - 1" PIPE PREPARATION MACHINE 1 - 4"

Primary Voltage: 220v
Consumables Invoiced In Addition To Rental Rate



PIPE PREPARATION MACHINE 2 - 8"

Primary Voltage: 220v
Consumables Invoiced In Addition To Rental Rate

MOBILE WELDING PACKAGES



WHEELBARROW GASOLINE GROUP SET

Capacity : 200a
Dimensions : 1200 x 800 x 700 mm
Weight: 7.7 kg
Possible Use : TIG 220v / MMA

GROUP GNR TROLLEY *

Capacity : 500A
Dimensions : 1950 x 1070 x 1610 mm
Auxiliary socket 380v: 14 KVA
Auxiliary socket 220v: 3.2 KVA
Weight: 800 kg
Possible use: TIG / MMA / MIG / Gouging / Innershield



GROUP GNR ROAD TROLLEY *

Capacity : 500A
Dimensions : 3160 x 1350 x 1800 mm
Auxiliary socket 380v: 14 KVA
Auxiliary socket 220v: 3.2 KVA
Weight: 850 kg
Possible use: TIG / MMA / MIG / Gouging / Innershield



GNR GROUP SET ON WHEELBARROW *

Capacity : 300A
Dimensions : 895 x 570 x 770 mm
Weight: 240 kg

* Refinery specification includes spare arrestor, chalwyn valve, battery terminal cover, fire extinguisher



32A TRANSFORMERS : ETN 015

Primary Voltage : 415v

Dimensions : 675 x 400 x 400 mm

Weight: 25 kg

3 sockets 32A: 380 V 5P

3 16A sockets: 220 V 2P + E

32A TRANSFORMERS : ETN 016

Primary Voltage : 415v

Dimensions : 675 x 400 x 400 mm

Weight: 25 kg

2 63a sockets : 380 V 5P

3 16a sockets : 220 V 2P + E

4 32a sockets : 380 V 5P

TRANSFORMER
220V 110V 500 VA



EXTENSION CABLES

LOC 508 : extension cord 20 m-16 A / 24 V

LOC 509 : extension cord 20 m-16 A / 220 V

LOC 518 : extension cord 20 m-32 A / 380 V

LOC 520 : extension cord 20 m-32 A / 380 V



PORTABLE ELECTRIC OVENS & SUBMERGED ARC TRACTORS



PORTABLE OVEN ETU - 100

Primary Voltage : 220v
Dimensions : 140 x 180 x 630 mm
Capacity : 100 electrodes \varnothing 3.2 mm
Power : 0.13 KW
Max temperature : 120 ° C
Weight: 5 kg

LARGE CAPACITY OVEN 3 SHELVES - ETU 101

Primary Voltage : 220v
Dimensions : 530 x 620 x 620 mm
Capacity : 150 kg
Power : 2.25 KW
Max temperature : 400 ° C
Weight: 40 kg



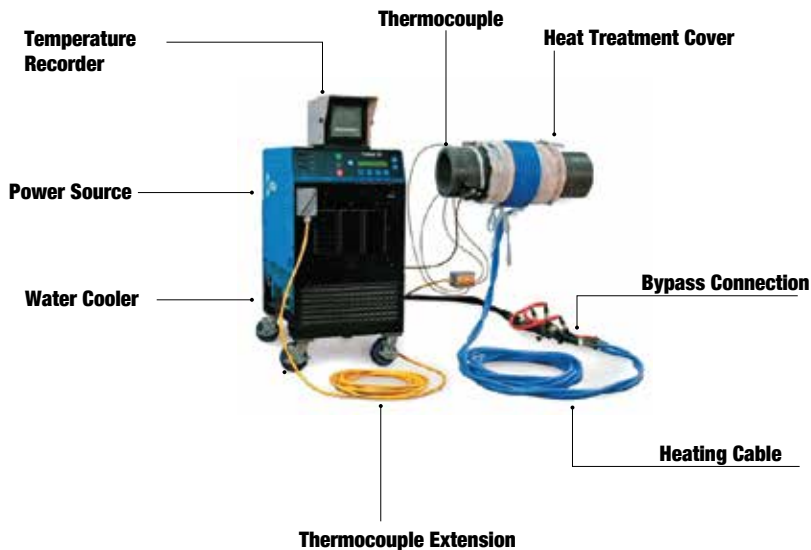
SUBMERGED ARC SET - SUB 100

Primary Voltage : 380v
Dimensions : 1200 x 800 x 1000 mm
Capacity : 700a
Track : 20m
Weight: 220 kg

INDUCTION PRE HEATING - FUME EXTRACTION UNITS

HEAT TREATMENT AND PREHEATING

Voltage : 380v
Dimensions : 1200 x 800 x 1500 mm
Output frequency : 30khz
Amperage : 50a
Maximum temperature capacity : 800 ° C
Weight: 240 kg



REVERSIBLE EXTRACTOR ASSEMBLY

Primary Voltage : 200v
Dimensions : 800 x 600 x 800 mm
Debit : 3540 m3 / h
Support: 10 m sheath
Machine Weight: 30 kg



FUME EXTRACTION

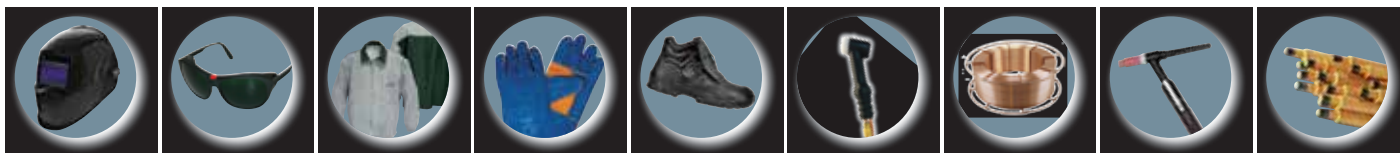
Primary Voltage : 220v
Provided with filter
Dimensions : 800 x 600 x 800 mm
Weight: 20 kg



FUME EXTRACTION WITH ARM

Primary Voltage : 2A 3P+N+T (ETN 003)
1600 m3/h arm nozzle flow
2750 m3/h arm nozzle flow

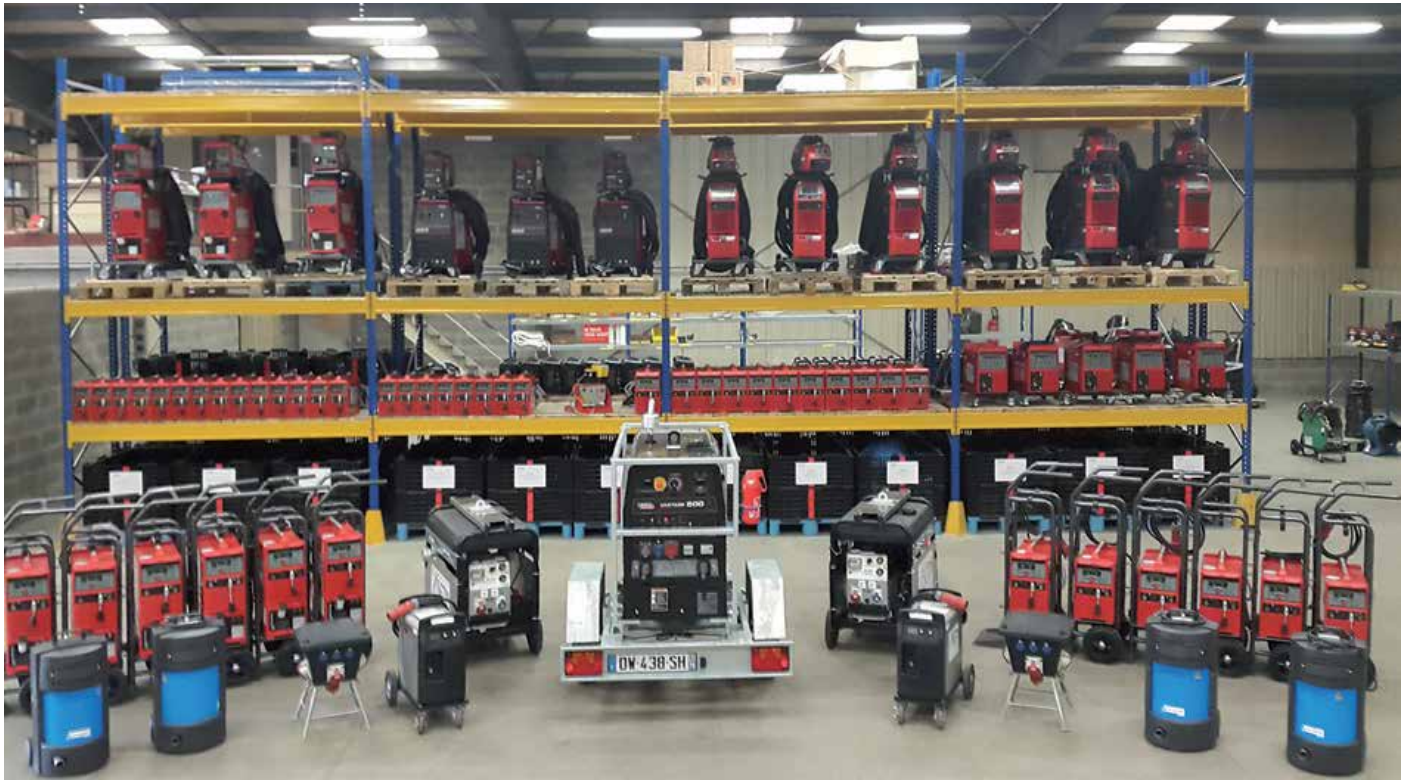
WE CAN ADD CONSUMABLES





COMPREHENSIVE RANGE FOR SALES AND RENTAL

**Rotators / Turning Rolls
Positioners / Headstocks
Column & Boom Manipulators
Turntables
Fit Up Beds & Growing Lines**



Redrockwelds offer a comprehensive range of Welding and Positioning equipment for rental, offering a one-stop-shop for our Clients throughout the UK Fabrication sector. We rent the latest industry technology equipment supported by our experienced Sales and Service Engineers.

You can trust Redrockwelds to deliverALWAYS!

Redrockwelds are working in partnership with Setin.

SETIN



**Unit 7B Cartside Avenue
Inchinnan Business Park
Glasgow, Scotland
PA4 9RX**

0141 812 0824

07498 986404

sales@redrockautomation.com

www.redrockautomation.com

@redrockweld